



MONTHLY MEMBERSHIP PROGRESS REPORT

District 13 OH1

Results as of: 04/30/2018

GMT: CINDY GREGG

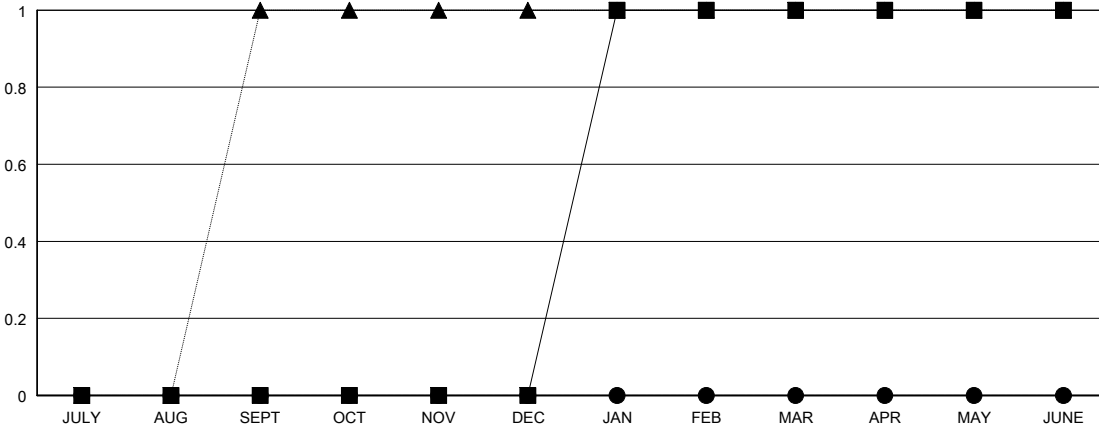
LOCATION OHIO

GMT CA

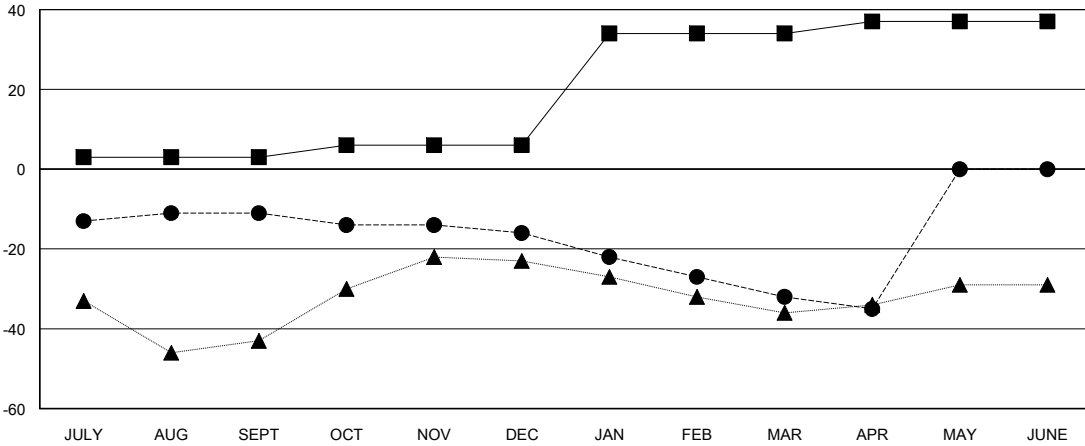
Clubs			
RESULTS FOR 2017-2018			
QUARTER	NEW CLUB GOAL	NEW CLUBS	DROPPED CLUBS
JULY/AUG/SEPT	0	0	0
OCT/NOV/DEC	0	0	0
JAN/FEB/MAR	1	0	0
APR/MAY/JUNE	0	0	0

Members			
RESULTS FOR 2017-2018			
QUARTER	MEMBER GROWTH NET GOAL	MEMBER GROWTH ACTUAL	DROPPED MEMBERS ACTUAL (including transfers)
JULY/AUG/SEPT	3	16	25
OCT/NOV/DEC	3	19	24
JAN/FEB/MAR	28	22	38
APR/MAY/JUNE	3	8	11

GOALS AND ACTUAL NEW CLUBS CUMULATIVE



GOALS AND ACTUAL MEMBERS CUMULATIVE



DROPPED CLUBS: 0

30 CLUBS OF 59 ADDED 1 OR MORE NEW MEMBERS

GENDER DISTRIBUTION	
MALE	1,334 (79.08%)
FEMALE	353 (20.92%)
Women Percentage Fiscal Year Goal: 27%	

DROPPED MEMBERS	
DECEASED	28
CLUB CANCELLED	0
OTHER	70
TOTAL	98

[CLICK HERE FOR CUMULATIVE MEMBERSHIP DATA](#)

TOTAL FAMILY UNIT MEMBERS	267
FAMILY MEMBERS PAYING HALF DUES	137